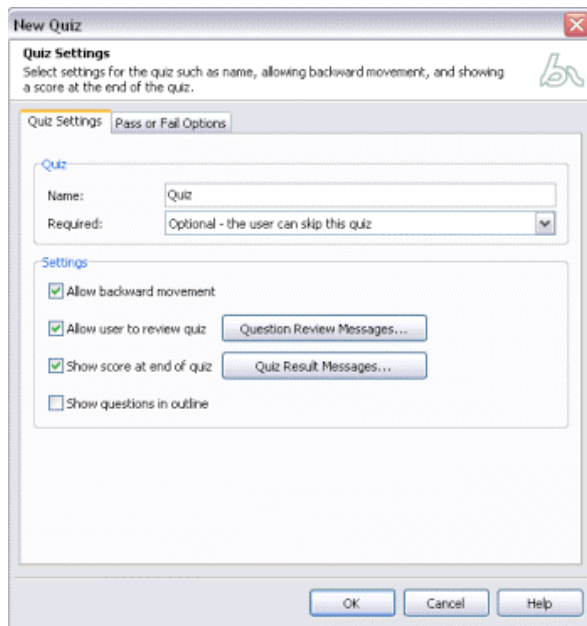
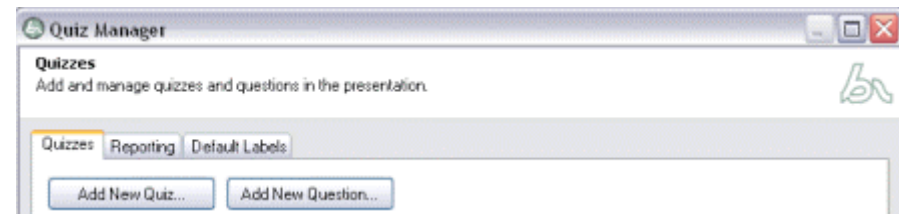


New or Multiple Quizzes

It is possible to have multiple quizzes in a presentation.

To add a new quiz, click the ‘Add New Quiz...’ button in the ‘Quiz Manager’ dialog box.



The ‘Quiz Settings’ dialog box will open, allowing you to make alterations to the properties of the quiz.

Once you have made any alterations to the properties of the quiz, click ‘OK’ to close the ‘Quiz Settings’ dialog box. You will return to the ‘Quiz Manager’ dialog box.

You can now add questions into your new quiz, using the skills you have already learned.

Adobe, Captivate and the Flash player logo are either registered trademarks or trademarks of Adobe Systems Incorporated in the United States and/or other countries.
Microsoft and PowerPoint are registered trademarks of Microsoft Corporation in the United States and/or other countries