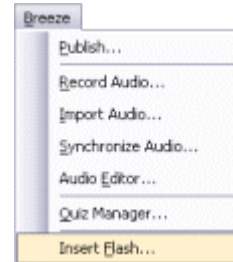


Inserting Flash

Inserting Flash is a simple process.

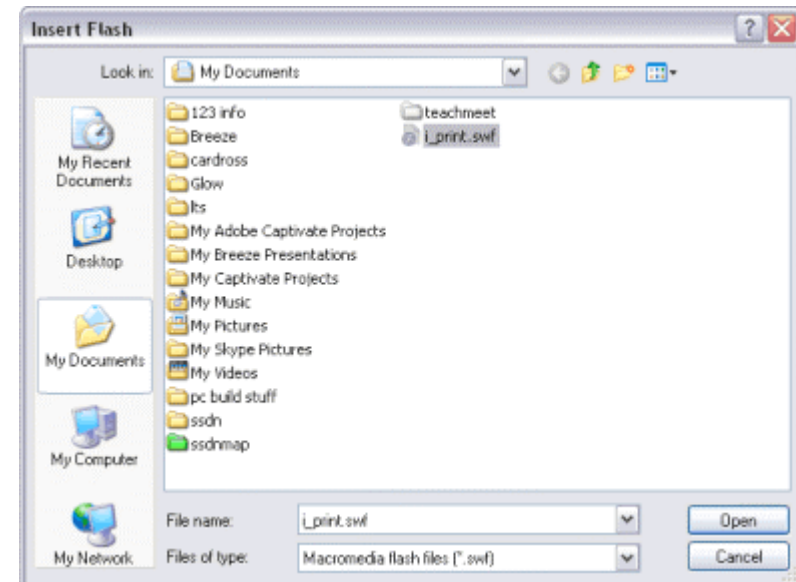
From the 'Breeze' menu, select 'Insert Flash...'



The 'Open' dialog box will open, allowing you to find your file.

Once you've located your swf file, click on it once and then click 'Open'

Your Flash file will now appear on the slide and will automatically play (unless you have scripted it to do otherwise!) - simple eh?



Adobe, Captivate and the Flash player logo are either registered trademarks or trademarks of Adobe Systems Incorporated in the United States and/or other countries. Microsoft and PowerPoint are registered trademarks of Microsoft Corporation in the United States and/or other countries