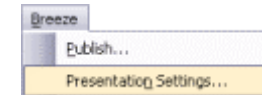


## Presentation Settings

To make life easier for your users, there are a number of options that you can adjust for your presentation.

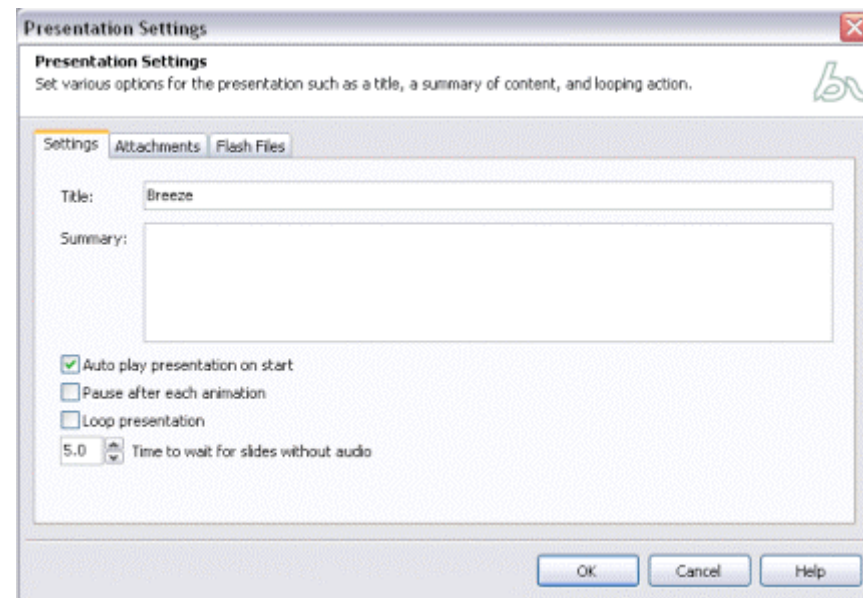
To adjust the presentation settings, click 'Presentation Settings...' from the 'Breeze' menu.



The 'Presentation Settings' dialog box will open.

On the first tab you can give your presentation a title and summary.

By default, the title is the same as the PowerPoint filename, but you may wish to change this to something more suitable. The title is displayed at the top of the browser window.

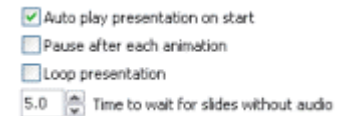


Adobe, Captivate and the Flash player logo are either registered trademarks or trademarks of Adobe Systems Incorporated in the United States and/or other countries.  
Microsoft and PowerPoint are registered trademarks of Microsoft Corporation in the United States and/or other countries

# An Introduction to Macromedia® Breeze™ Presenter

There are a number of playback options you can adjust – by default, ‘auto play presentation on start’ is selected. It is advisable to leave this checked, as the presentation will start automatically once it has loaded.

You can include a pause after each animation, but this can often confuse your user as they will need to click the ‘play’ button in the presentation window to resume the presentation.



Another option is to have the presentation loop at the end. Unless you want the presentation to start all over again, leave this box un-checked.

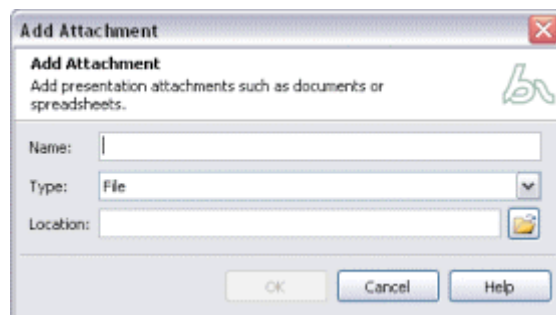
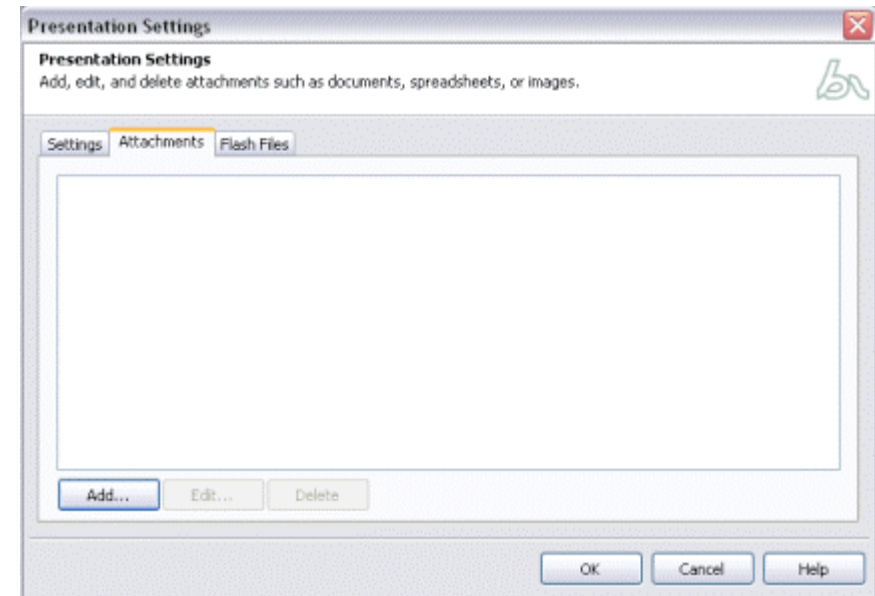
The default time allocation for slides that do not contain audio is 5.0 seconds, but you can alter this if you wish. Click the ‘Up’ or ‘Down’ arrows next to the time to adjust it.

# An Introduction to Macromedia® Breeze™ Presenter

The second tab allows you to add any attachments to the presentation. You may wish to include files that you want the user to work on throughout the presentation, or files as additional information.

To add an attachment, click the 'Add...' button.

The 'Add Attachment' dialog box will open, allowing you to give your attachment a name.



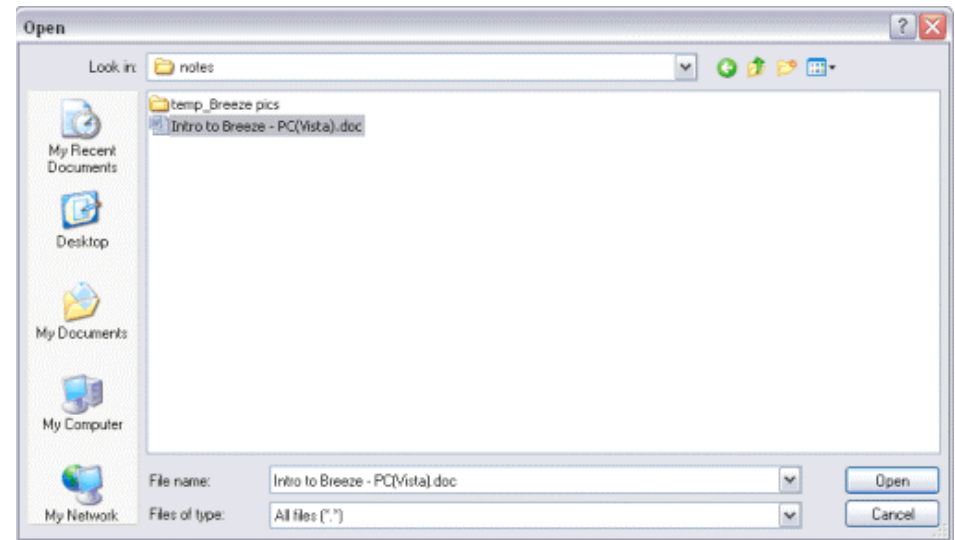
**TIP** – whatever you type here will be displayed as text in the presentation player when the user clicks on the 'attachments' button.

# An Introduction to Macromedia® Breeze™ Presenter

Next to 'Type', decide whether the attachment is a 'file' or 'link'.

Next to 'Location' either type in the URL of the link, or click the 'Browse' button to add a file.

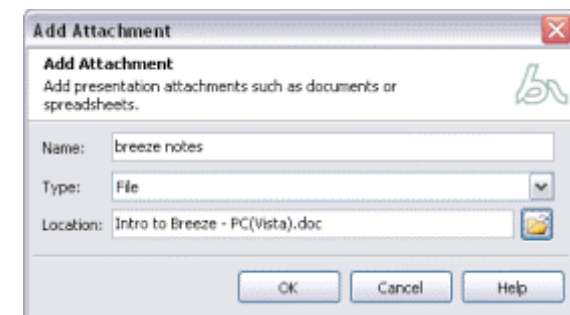
The 'Open' dialog box will open, allowing you to navigate to find your file.



Once you have found your file, click 'OK'

The 'Open' dialog box will close, returning you to the 'Add Attachment' dialog box, this time with your filename and path listed next to 'Location'.

Click 'OK' to close the 'Add Attachment' dialog box, and return to the 'Presentation Settings' dialog box.



# An Introduction to Macromedia® Breeze™ Presenter

Your attached file will be listed in the list of attachments.

Click 'OK' to close the 'Presentation Settings' dialog box.

