

The Mouse

One to the great elements of Captivate 2 is the ability to show the movement of the mouse in your projects.

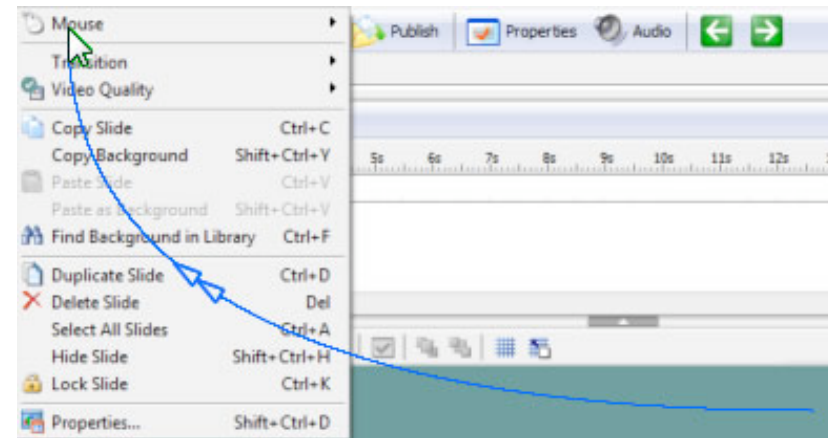
NOTE: *If you have recorded an assessment simulation, the mouse will not be shown*

If you need to, click the 'Edit' tab to return to the 'edit' view.



Where the mouse is being shown on a slide, it is noted in the thumbnail view in the slide pane on the left of the screen.

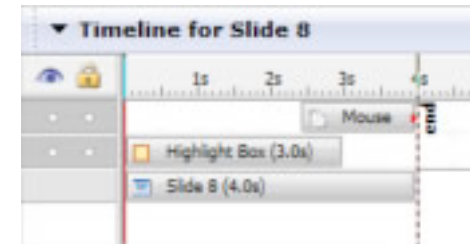
Click on a slide where the mouse is shown. The mouse start and end points are shown on the slide, and connected by a blue line denoting its path and direction. To move the start or end point, simply click and drag.



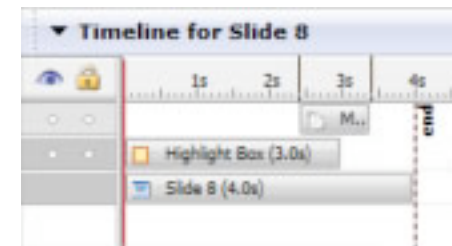
Adobe and Captivate are either registered trademarks or trademarks of Adobe Systems Incorporated in the United States and/or other countries.

An Introduction to Adobe® Captivate™ 2

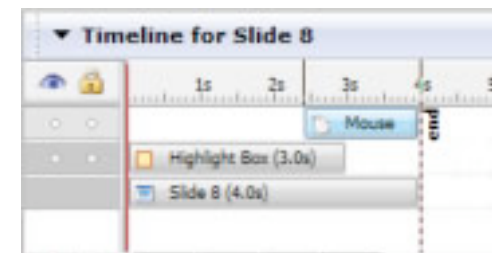
Ideally, you will want the mouse to be the highest level in the timeline, so that it appears on top of any other object.



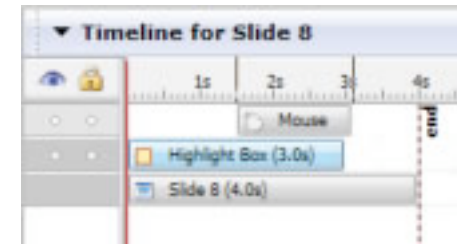
To make the mouse activity faster, click and drag the end point of the mouse block in the timeline to the left. The block will appear shorter, and the mouse movement faster when the movie is replayed.



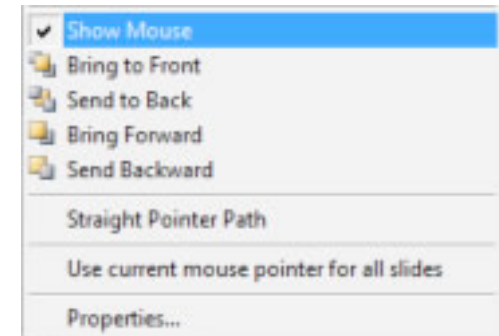
Similarly, to slow the mouse movement down, click and drag the end point of the mouse block in the timeline to the right. The block will appear longer, and the mouse movement slower when the movie is replayed.



To change when the mouse movement appears on the slide when it is replayed, click and drag the mouse block along the timeline.



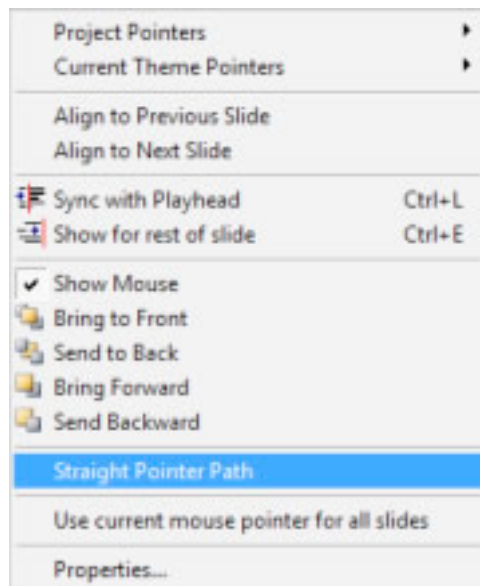
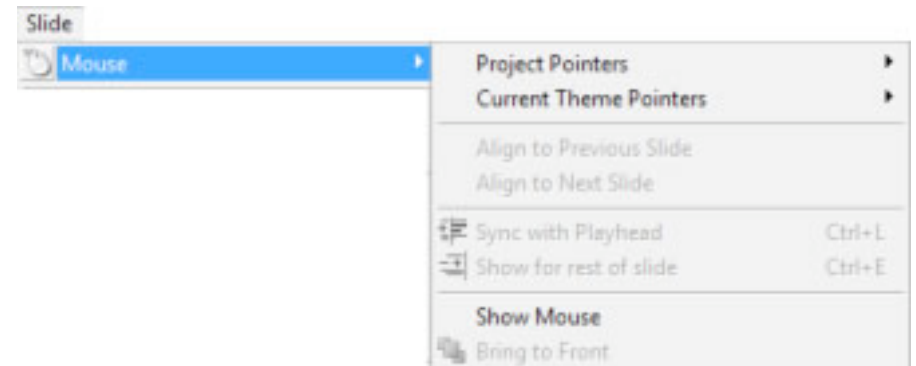
It is possible to hide the mouse at any time. You may wish to hide the mouse to draw your users attention to something else. On the slide, right click on the mouse. From the pop-out menu, click to remove the tick from 'show mouse'. The mouse will now not be shown on that slide.



TIP – *if you choose to hide the mouse from a slide, it is advisable to select 'Align to next Slide' from the right-click pop-out menu of the mouse pointer. That way, there isn't a jump for the user in the position of the mouse when they*

An Introduction to Adobe® Captivate™ 2

To show the mouse again, select 'Mouse' from the 'Slide' menu, and then select 'Show Mouse'.



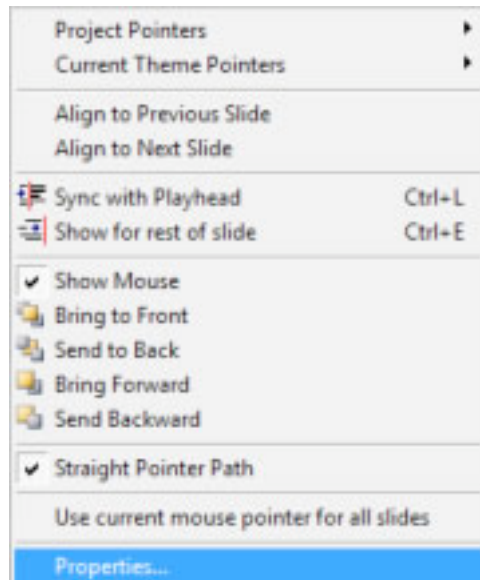
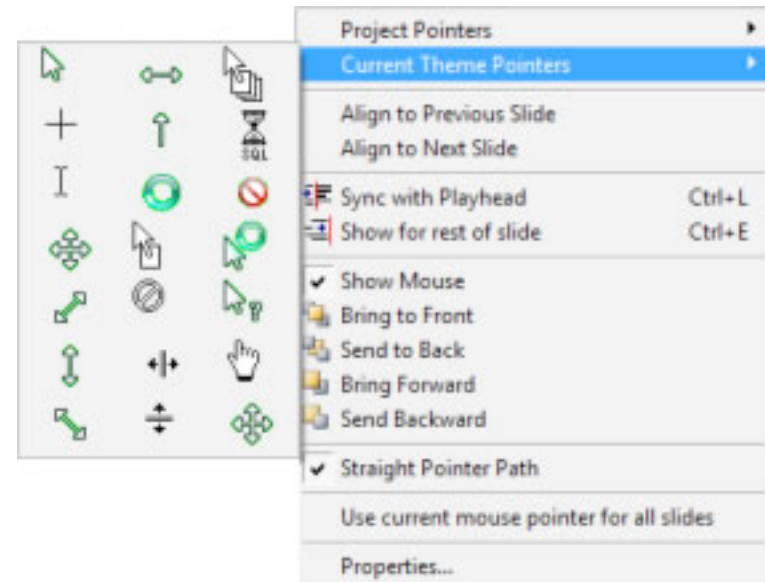
By default, the mouse path is shown as a curve, however you may wish this to appear as a straight line. To do this, on the slide right-click on the mouse.

From the pop-out menu, click to select 'Straight Pointer Path'.

The path will now be shown as a straight line.

You can alter the look of the mouse pointer on any slide.

On a slide, right-click on the mouse pointer. From the pop-out menu that appears, select 'Current Theme Pointers' and select the one you wish to use. Alternatively, select 'Project Pointers' and select the one you wish to use. The mouse pointer will now use the pointer image you selected.



There are other properties of the mouse pointer that you can alter. On a slide, right-click on the mouse pointer, and select 'Properties...' from the pop-out menu.

The mouse Properties dialog box will open. In the dialog box, you can alter the pointer, the size of the displayed mouse, a visual representation of the click, and whether a sound is played to denote a mouse click or not.

You also have the option to 'apply to all' slides if you wish.

Once you have made any alterations, click 'OK' to close the dialog box.

